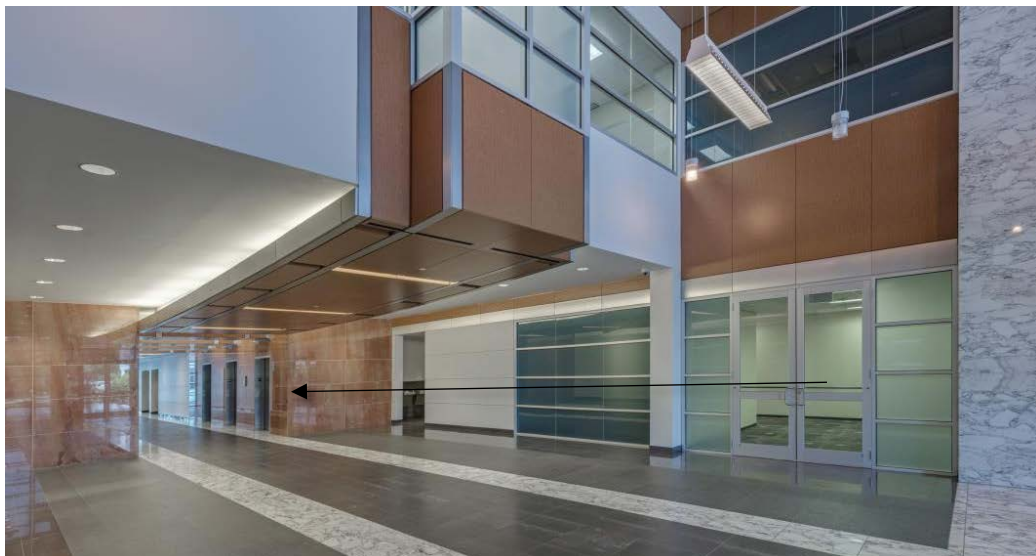


CAM Office Visitor Information

- 1) Parking is permitted in any non-covered spot on any side of the building. The main entrance to the building is located facing South Creek Street. Please exercise caution regarding cars passing through the parking lot. Be very careful walking on the smooth tiles on the exterior building when entering/exiting the parking lot as they get very slick when wet.



- 2) Upon entry to the building lobby, locate and take the central elevators to the 2nd floor. The main CAM lobby is located through the glass doors to the right of the elevators. Upon arrival, you will be greeted by our receptionist. Please sign in and relax in the waiting area while your party is retrieved.



- 3) Evacuation procedures – In the event of a fire alarm or emergency, please see the below map for stairwell locations and exit routes. The fire evacuation map is also located in all breakrooms and stairwell entrances. In the event of an evacuation, please follow the Fire Warden’s directions to the Muster Point, located on the side of the building facing Grainger.

FIRE EVACUATION MAP



- -- EXIT ROUTE
- STAIRWELL
- ⊕ FIRST AID KIT
- AED (DEFIBRILLATOR)
- 🔥 FIRE EXTINGUISHER
- 👤 MUSTERPOINT